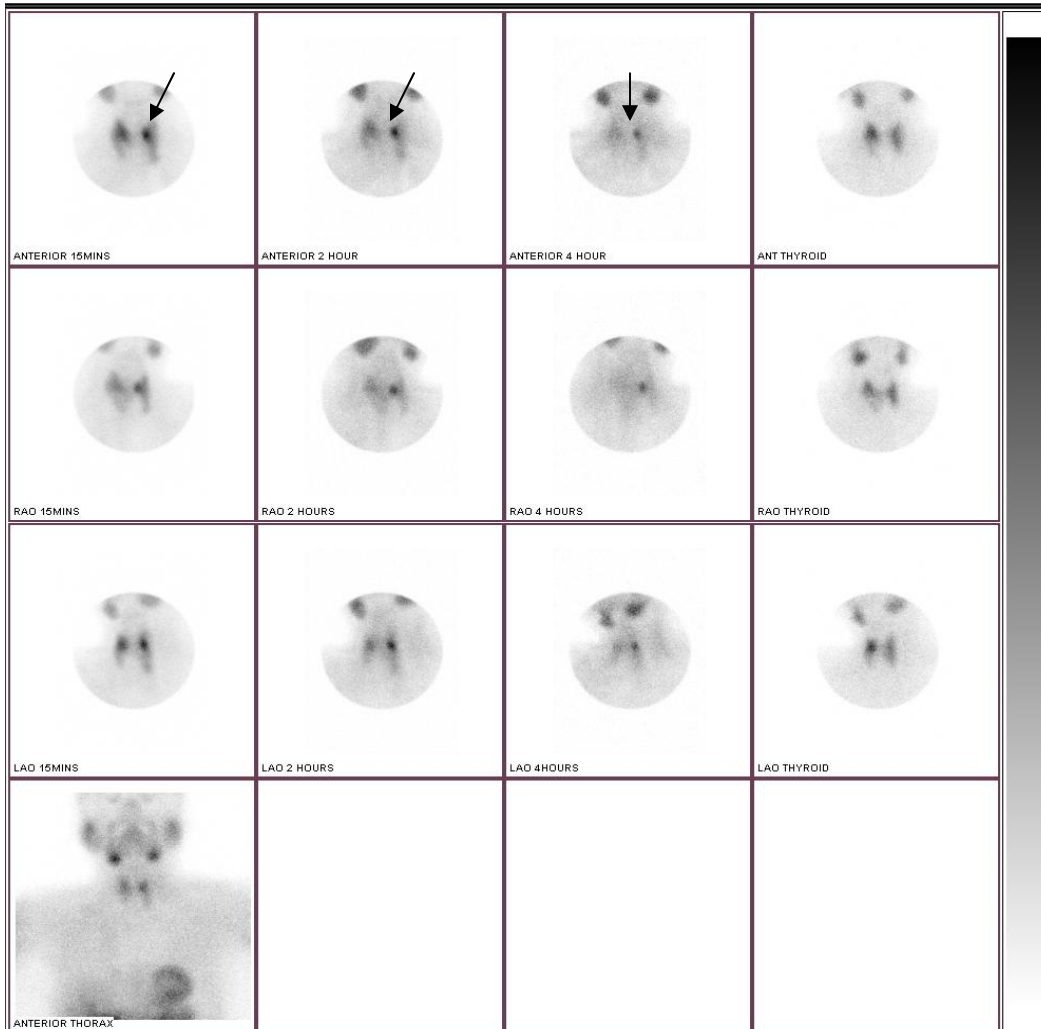


# PARATHYROID ADENOMA



Asymptomatic 70 yo female with hypercalcaemia & an elevated PTH of 12.6.  
Sent for localisation of possible parathyroid adenoma.

Sestamibi parathyroid scan reveals a persistent focus of Sestamibi retention in the upper medial left side up to 4hours post injection, discordant from thyroid tissue.  
This indicates a functioning parathyroid adenoma.

The patient underwent minimal open surgery.