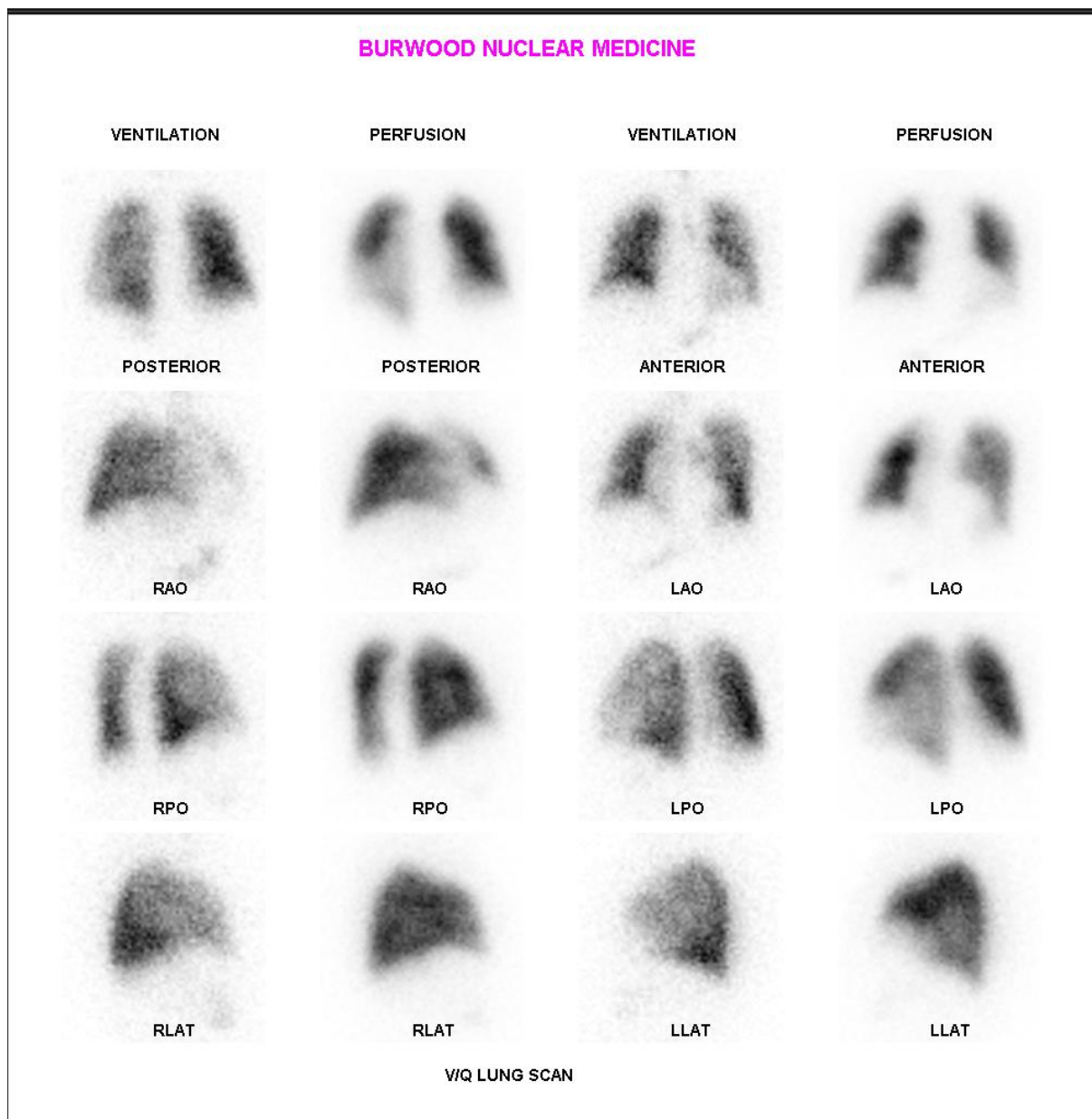


## AN UNUSUAL CASE OF A FALSE POSITIVE V/Q STUDY



A 79 year old woman presented with increasing SOB since a left total knee replacement 16 months ago. She had SOB post operative but had no evidence of DVT on Doppler at the time. She never smoked, has no history of asthma or recent distance travel. A recent stress echo was normal.

V/Q study shows normal ventilation of both lungs but hypo-perfusion of the whole left lower lobe (mismatched). A plain chest X-ray showed severe scoliosis convex to the left severely reducing the left thoracic cavity volume. This could have been the cause of the mismatched left lower lobe abnormality.

To resolve PE vs. no PE a CTPA was performed. This showed no intra-arterial filling defects of the left lower lobe vessel but did show crowding of the vasculature of the left lower lobe accounting for the V/Q abnormality simulating PE.