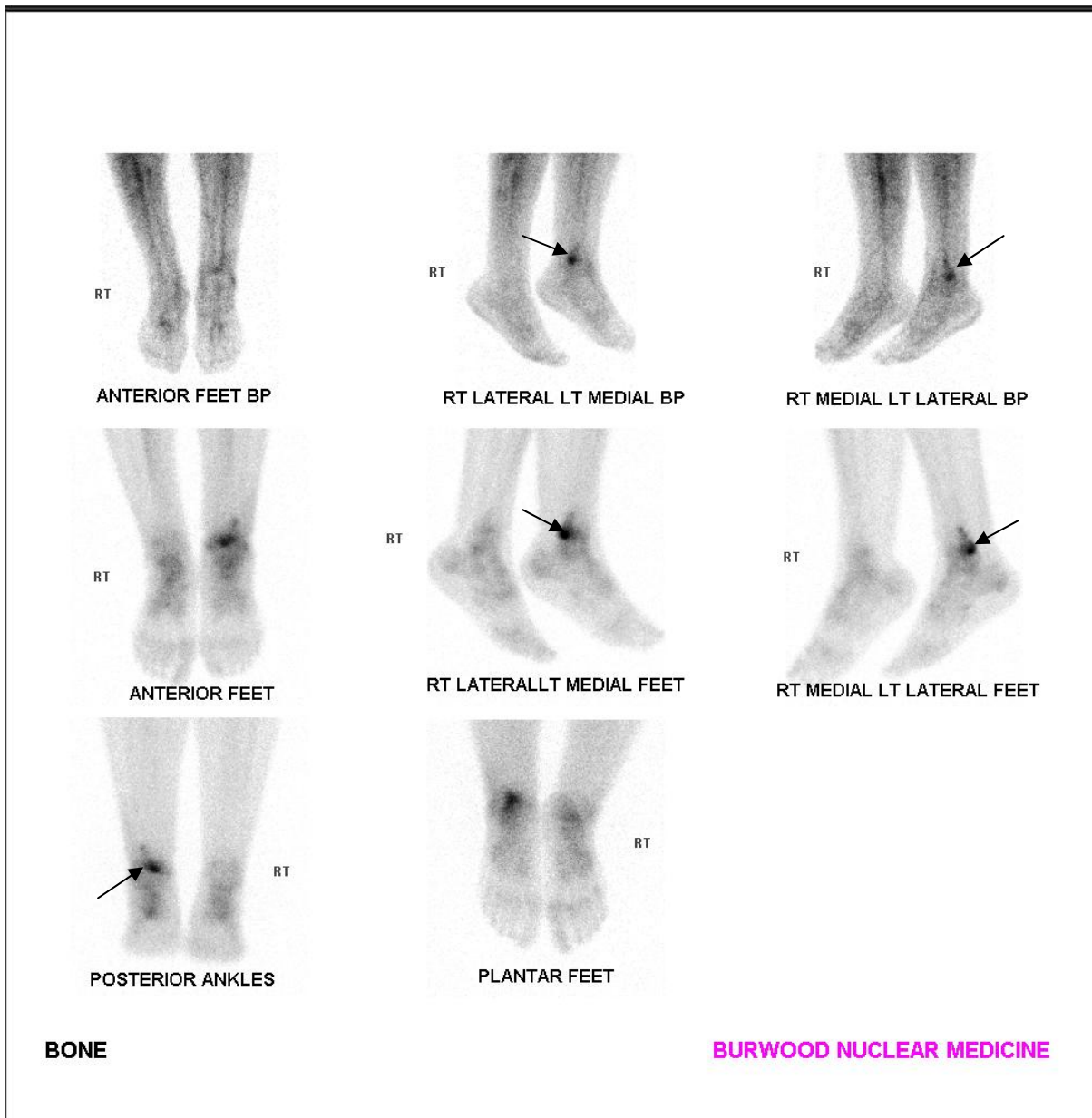


POSTERIOR TIBIAL PLAFOND FRACTURE



A 30 year old male presented with an eversion injury of the left ankle 2 weeks ago during soccer. There was continuous pain and swelling. X-ray was normal.

The blood pool images showed a general increased vascularity of the left ankle with intense hyperaemia of the posterior aspect of the left ankle.

In the delayed images there was intense abnormal tracer uptake by the posterior aspect of the left tibial plafond consistent with a recent fracture. There was also post-traumatic synovitis of the left ankle joint.

Anterior tibial plafond fractures are more common than posterior fractures.