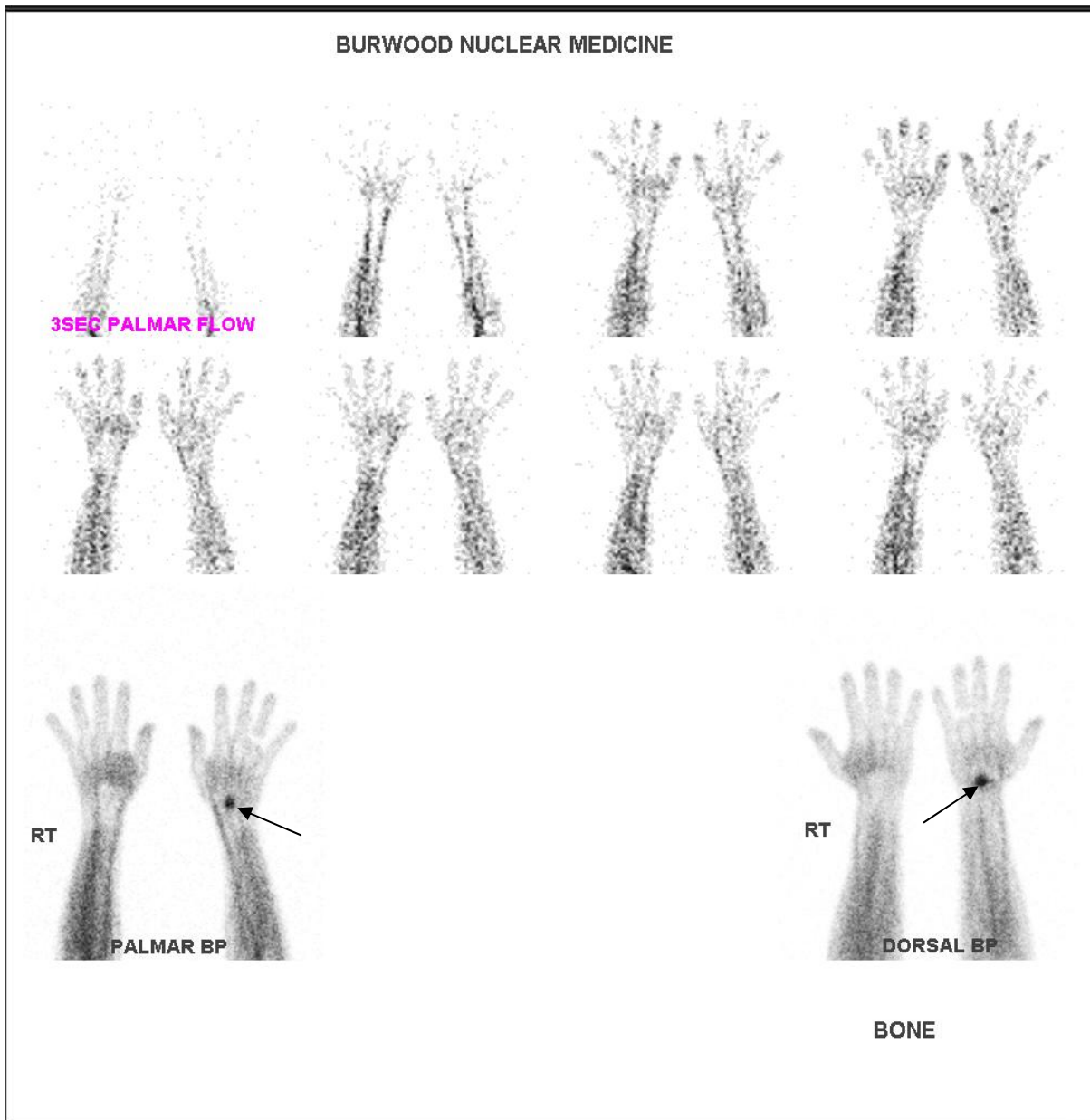


LUNATE FRACTURE



A 40yo female presented with a swollen and painful left wrist after falling on her hands at ice skating 12 days prior. X-rays are normal.

The early images show increased vascularity and intense focal hyperaemia of the left lunate (arrows above).

The delay images show intense abnormal tracer uptake by the left lunate bone consistent with a recent fracture (arrows below).

