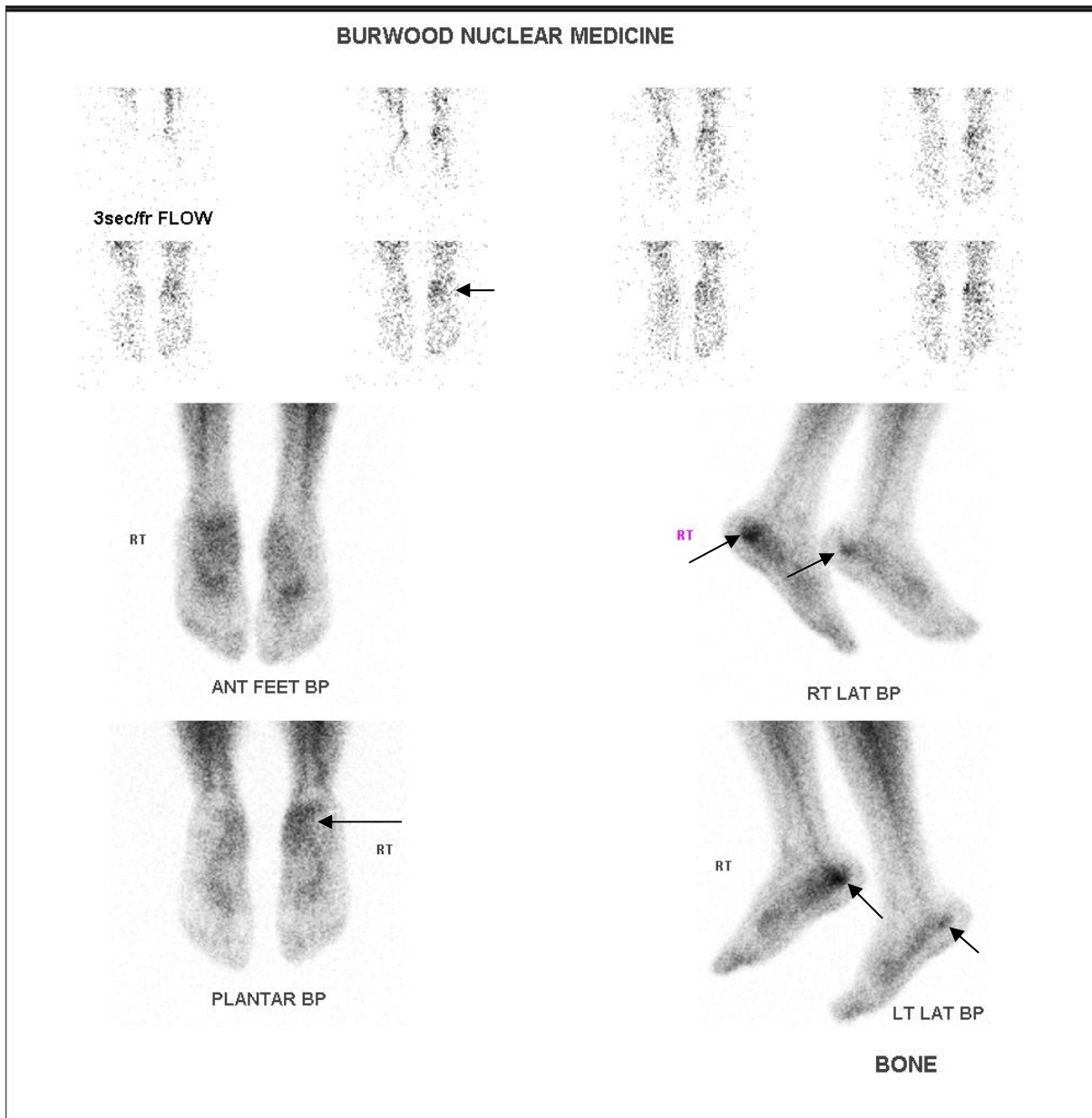


STRESS FRACTURE OF THE CALCANEUM



A 46yo female presented with right heel pain that, getting worse over the last few months. There was no history of any injury however she worked as a cleaner on her feet all day. The left foot was asymptomatic.

The early images (arrows above) show an increased vascularity and intense hyperaemia of the right inferior calcaneum. There was mild hyperaemia of the anteromedial plantar aspect of the left calcaneum.

The delay images (arrows below) show intense abnormal tracer uptake by the inferior aspect of the right calcaneum due to a stress fracture, possibly of the insufficiency type.

There was moderate abnormal uptake by the anteromedial aspect of the left calcaneum due to moderately severe plantar fasciitis.

