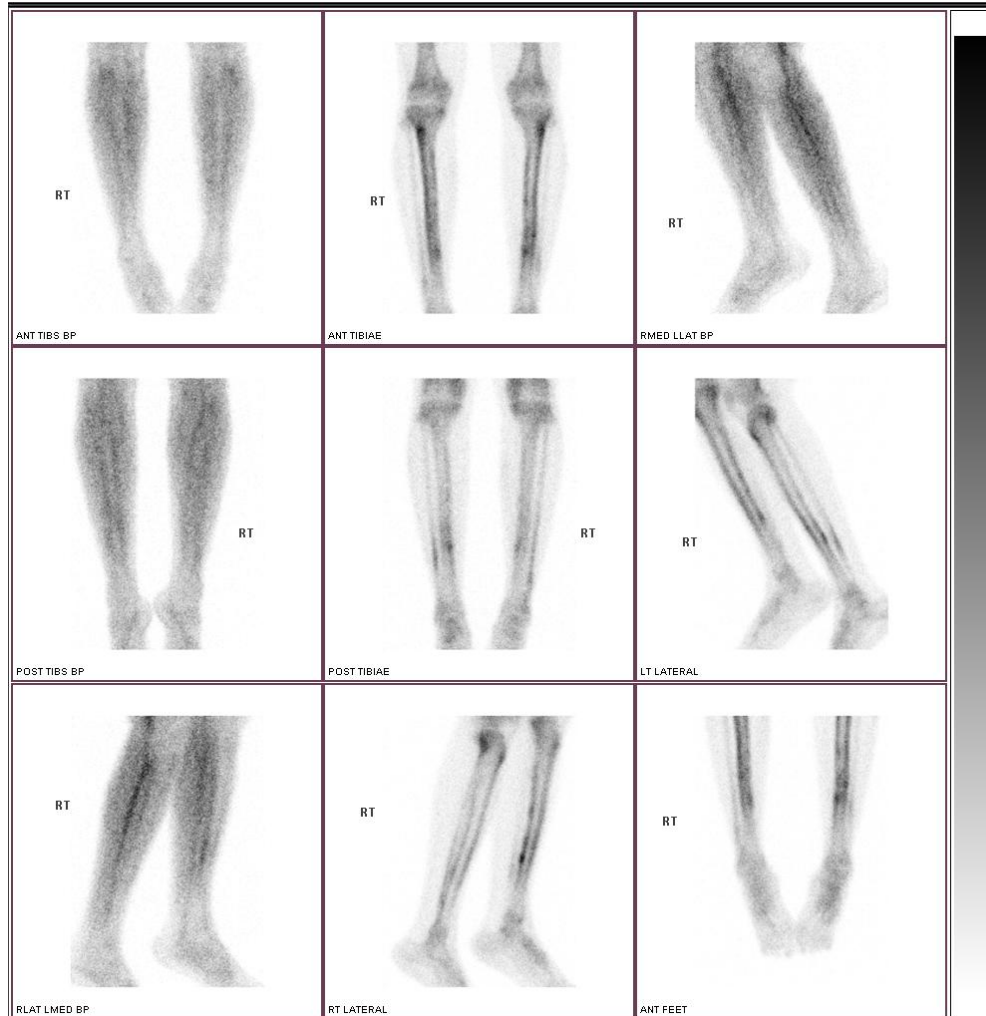


EXTENSIVE BILATERAL TIBIAL SHAFT PERIOSTITIS & MULTIPLE INTERMEDIATE & LOW GRADE STRESS FRACTURES OF TIBIAE & FIBULAE (UNUSUAL)



A 22yo male, right arm fast bowler presented with pain in both distal fibulae. X-rays were normal.

The bloodpool images show hyperaemia along the lateral shafts of both tibiae and focal hyperaemia of the medial distal left tibia.

Delayed images reveal extensive uptake by the antero-lateral cortex of both tibial shafts, worse on the right. Fusiform focus in distal medial left tibial shaft and a faint focus by the mid tibial shaft. Mild fusiform focus in distal medial right tibial shaft and both distal fibula shafts.