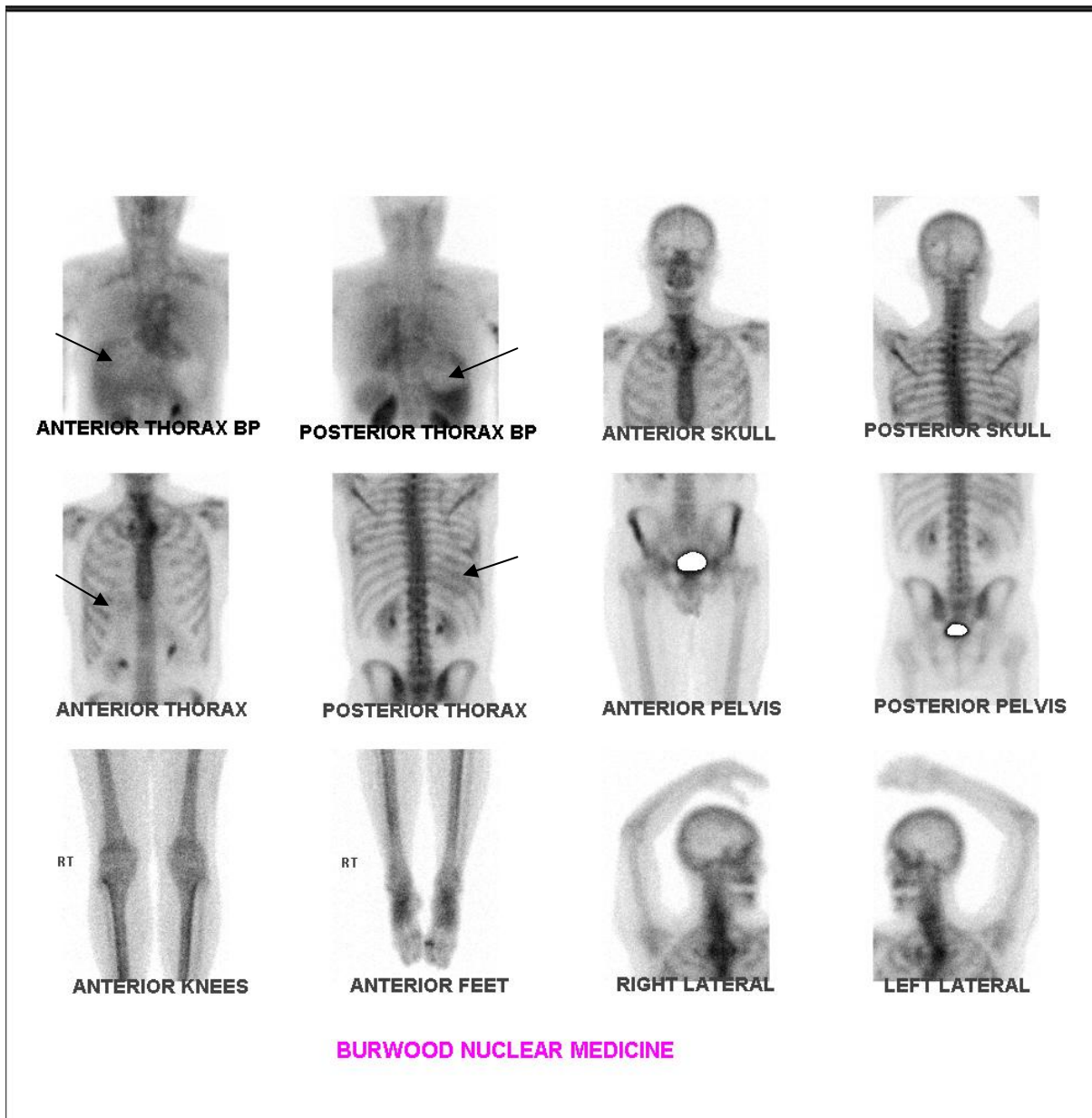


CALCIFIED COLO-RECTAL CANCER LIVER METASTASIS



A 57 year old male with a history of colon carcinoma presented with shoulder, chest and neck pain. He had no history of trauma.

The early images show a large rounded area of decreased vascularity in the liver superiorly (arrows).

The delayed images (arrows) show a large focus of mild abnormal bone tracer accumulation in the superior lobe of the liver at the site of the “avascular” lesion seen on the early images.

This is consistent with a large calcified metastasis.